



PARMA 15T

AERIAL TRAILER MOUNTED PLATFORM ARTICULATED AND TELESCOPIC, FOR WORKING HEIGHTS UP TO 15 METER (49,21 FEET)

STANDARD MODEL:

- * 230V main power
- * Visual level for stabilisation
- * Ball Coupling with inertia brake
- * Aluminium Basket (1,1 x 0,6) m
- * Hydraulic stabilizers
- * Proportional controls
- * Emergency lowering from the ground



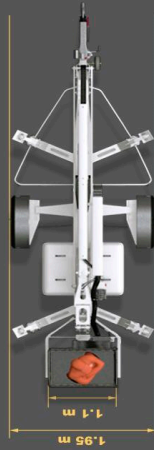
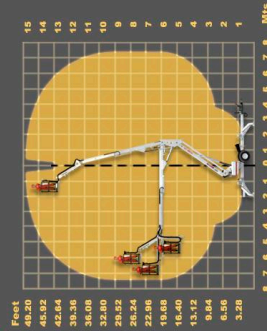
Management
ISO 9001:2008



www.tvs.com
ID: 1101000424



PARMA 15-T



1,900 Kg
200 kg

Optional accessories

- 1 Electric outlet in basket
- 2 Descent buzzer
- 3 Spare wheels
- 4 Rotating light
- 5 Hour meter
- 6 Lighting kit for roads
- 7 Hydraulic basket rotation
- 8 Bi energy: 230V + (Gasoline or Batteries)
- 9 Bi energy: 230V + Diesel Engine
- 10 Batteries main power
- 11 Bi energy: Batteries + Petrol Engine
- 12 Bi energy: Batteries + Diesel Engine
- 13 Charge indicator for batteries
- 14 Insulating basket
- 15 Emergency lowering from the basket
- 16 Control weight in the basket
- 17 Self driving system on wheels
- 18 Support pads (40 x 30)cm
- 19 Stabilizer for ball and ring coupling
- 20 Ring coupling

